

Detected cases



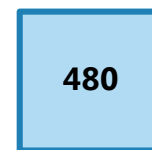
Outbreaks, Situations and Single Cases being managed



Open



Surveillance



Closed

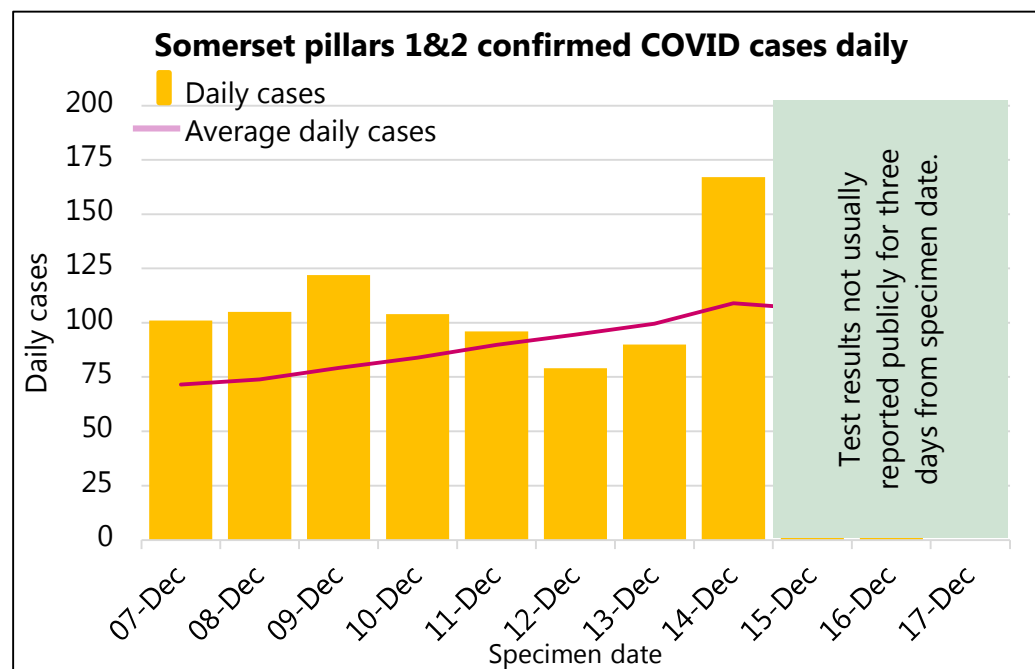


Latest 7 day rate per 100k

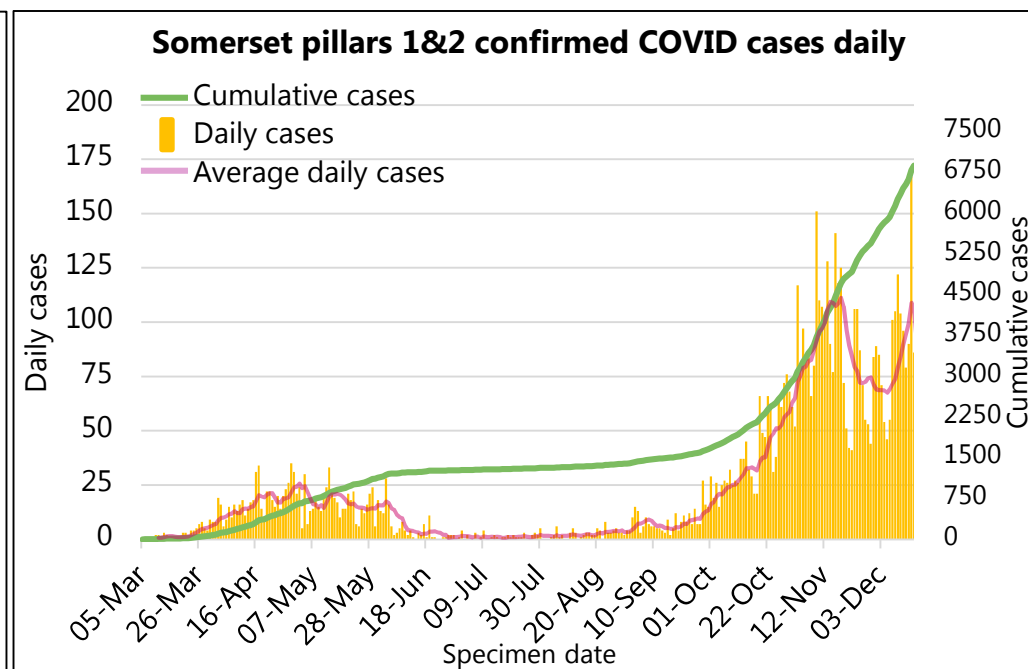
08-Dec to 14-Dec



Most recent days of cases



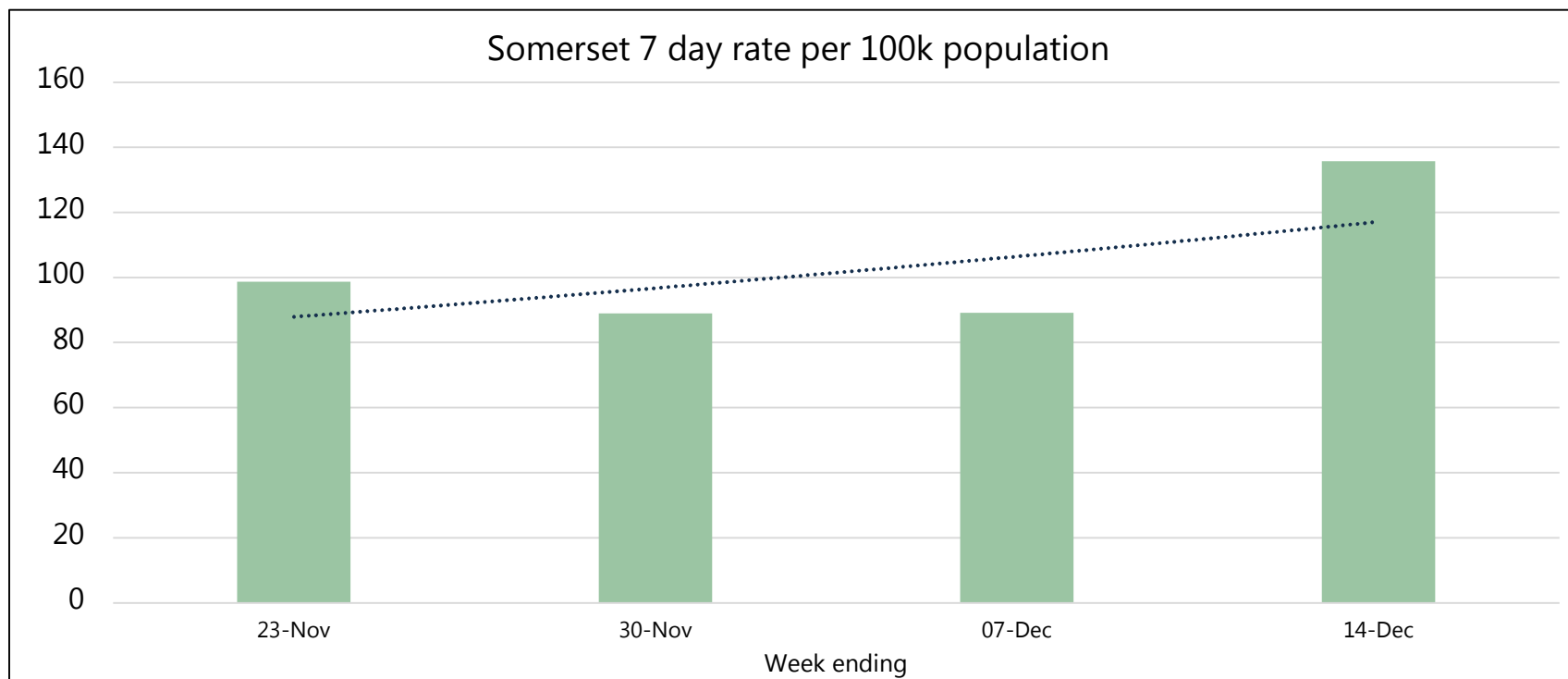
Overall profile of the epidemic in Somerset



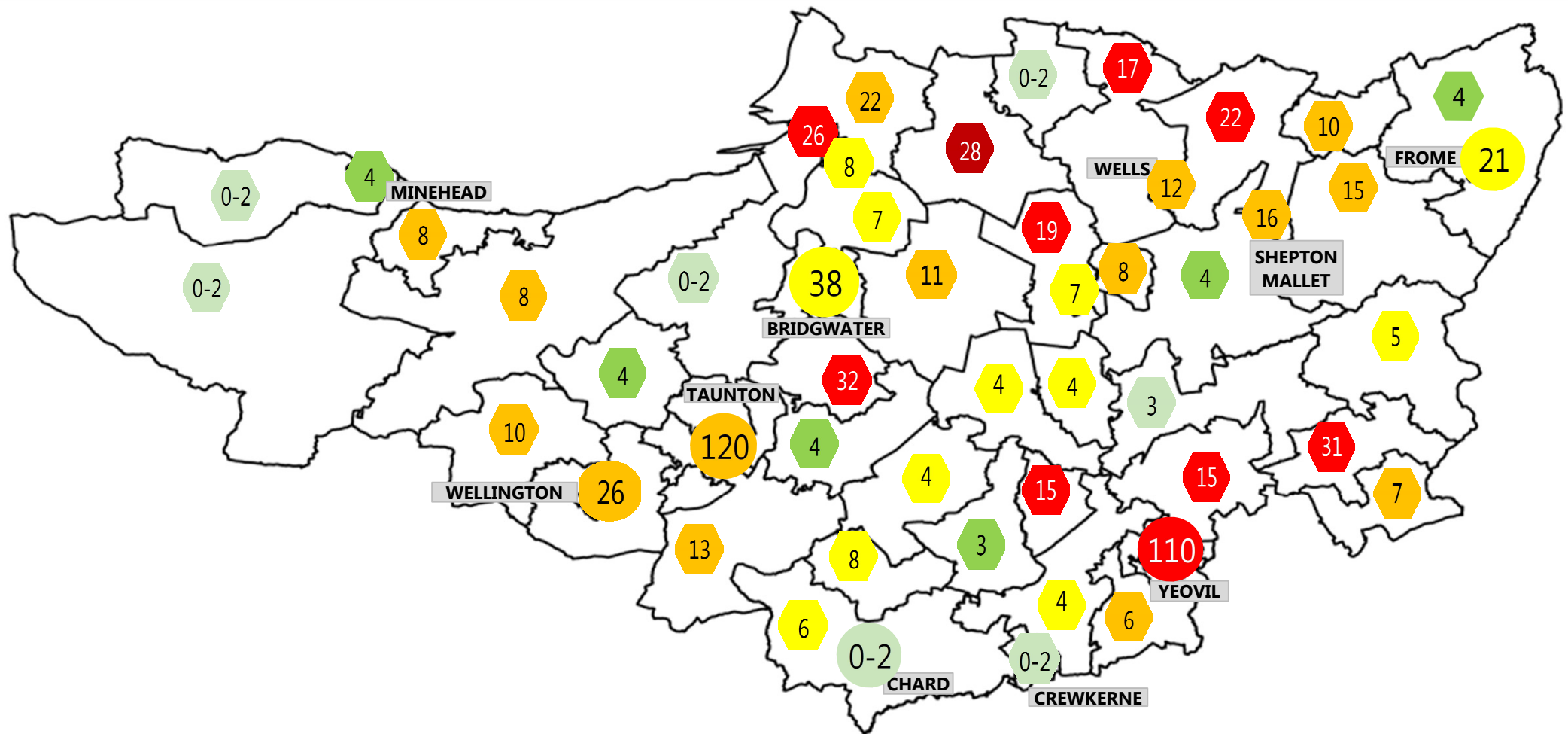
Somerset COVID-19 Local Outbreak Management Plan Dashboard

Weekly cases (excludes most recent three days with incompletely reported results)

District	17-Nov to 23-Nov	7 day rate per 100k	24-Nov to 30-Nov	7 day rate per 100k	01-Dec to 07-Dec	7 day rate per 100k	08-Dec to 14-Dec	7 day rate per 100k
Mendip	156	135.0	91	78.7	89	77.0	155	134.1
Sedgemoor	143	116.1	124	100.7	99	80.4	175	142.1
Som W & Taun.	105	67.7	120	77.4	106	68.3	199	128.3
Sth Somerset	151	89.7	165	98.0	207	123.0	234	139.0
Somerset	555	98.7	500	88.9	501	89.1	763	135.7



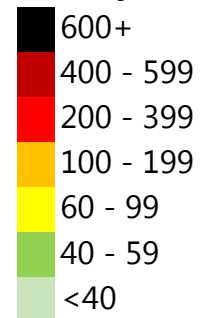
Somerset COVID-19 Local Outbreak Management Plan Dashboard



Date range 08-Dec to 14-Dec

The numbers in this map show the current cases in the past 7 days, the colour of the tag shows the equivalent rate of positive cases per 100,000 population over a 7 day period. Case numbers in Taunton, Wellington, Chard, Yeovil, Bridgwater and Frome have been combined across the urban area with rates based on the combined area population.

Weekly rate per 100k



Somerset COVID-19 Local Outbreak Management Plan Dashboard

Latest R number range for the South West

0.8-1.0

Last updated on Friday 11 Dec 2020

Produced by:

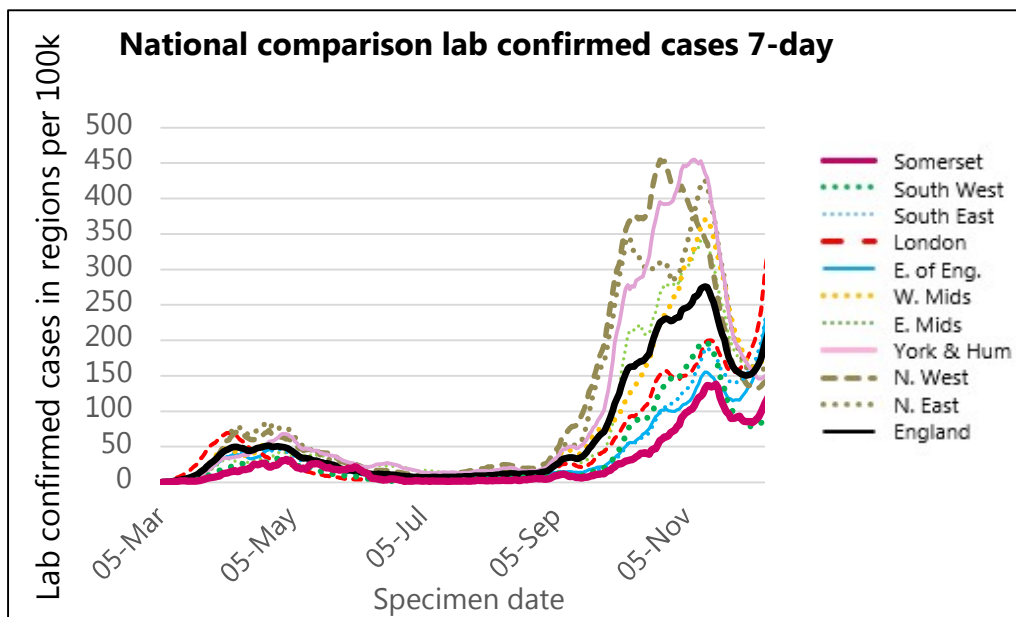
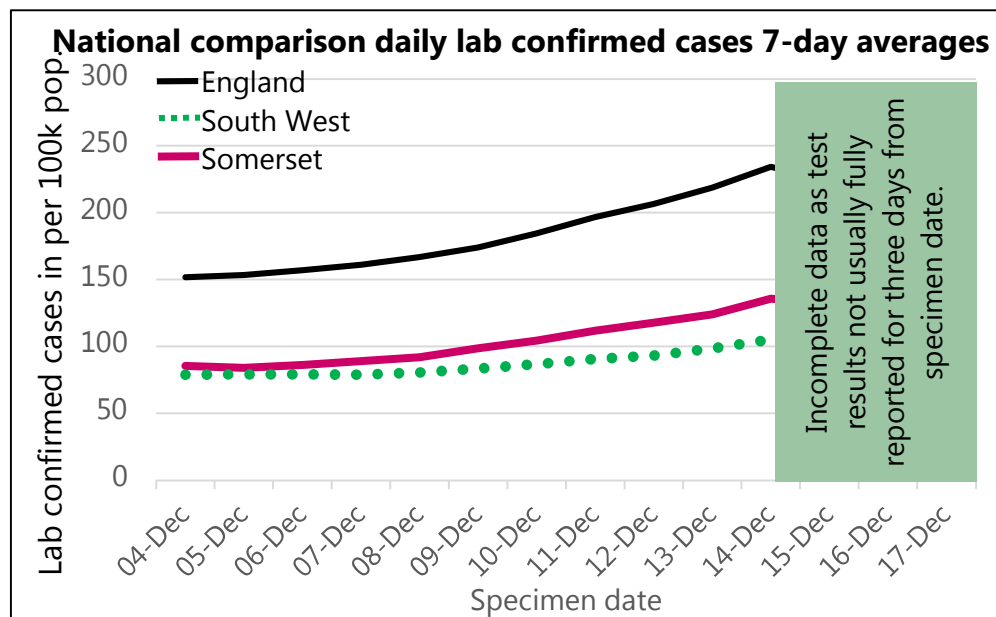
UK Government Scientific Advisory Group for Emergencies (SAGE)

What is R?

The reproduction number (R) is the average number of secondary infections produced by 1 infected person.

An R number of 1 means that on average every person who is infected will infect 1 other person, meaning the total number of new infections is stable.

Region	R
UK	0.9-1.0
England	0.8-1.0
East of England	0.9-1.1
London	0.9-1.1
Midlands	0.8-1.0
NE and Yorks	0.7-0.9
North West	0.7-0.9
South East	0.9-1.1
South West	0.8-1.0



Somerset COVID-19 Local Outbreak Management Plan Dashboard

COVID deaths week ending

① 04/12/2020

All COVID

Hospital



Care Home

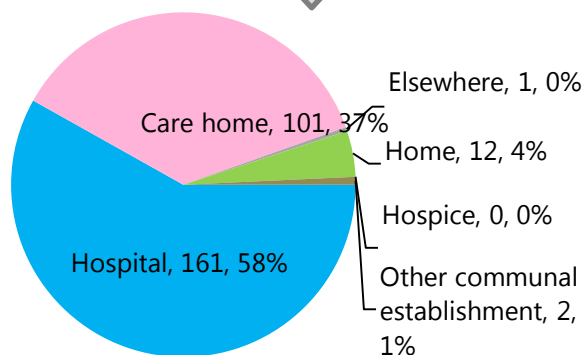


Other

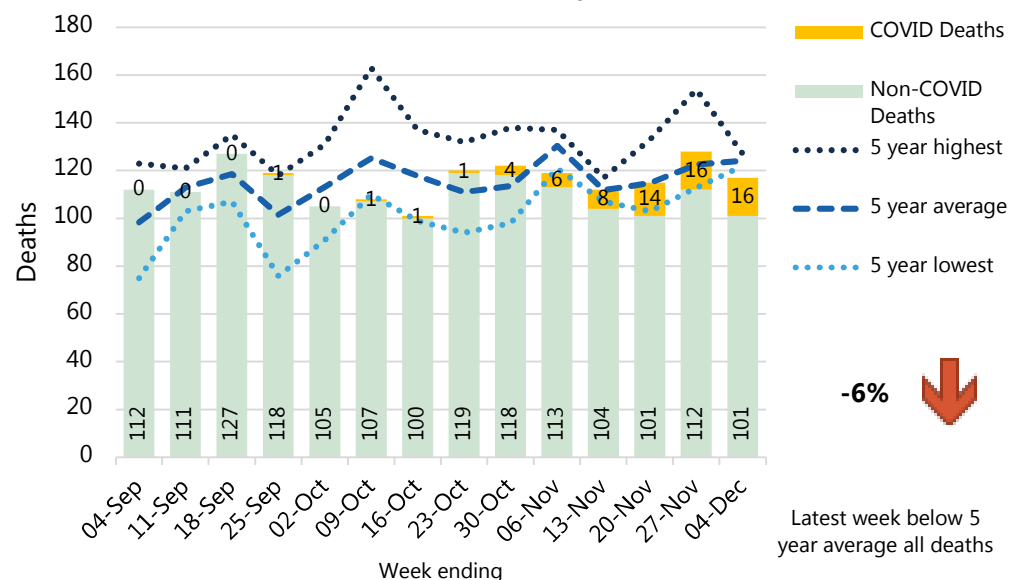


All COVID Deaths in Somerset by Place of Death (ONS)

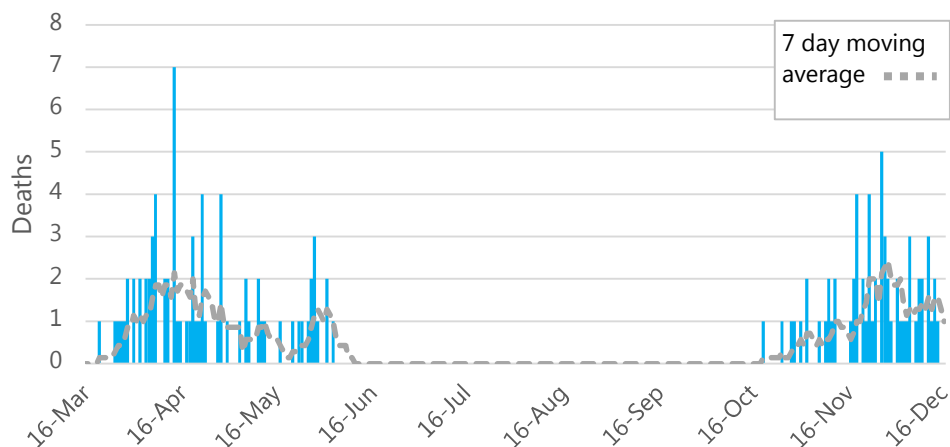
Total 277 04/12/2020



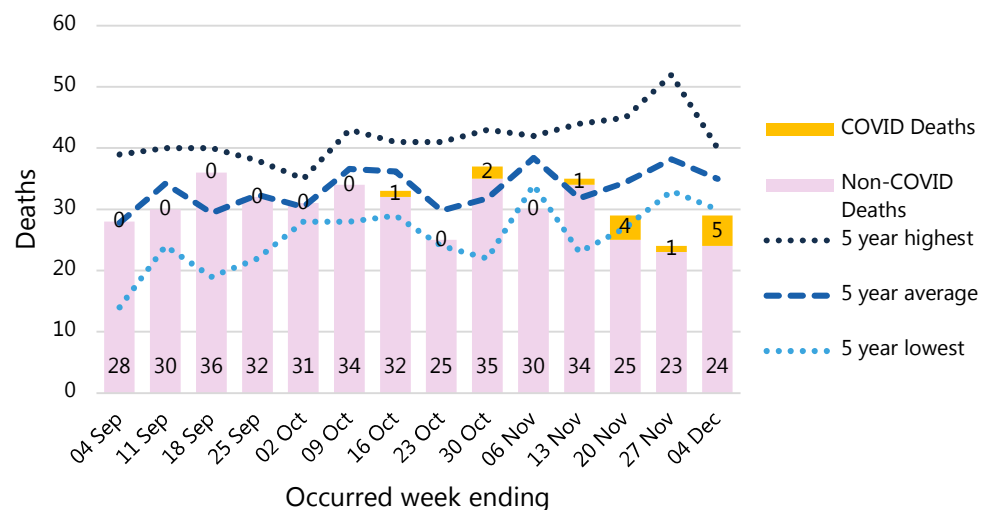
Somerset All Deaths (weekly) (ONS)



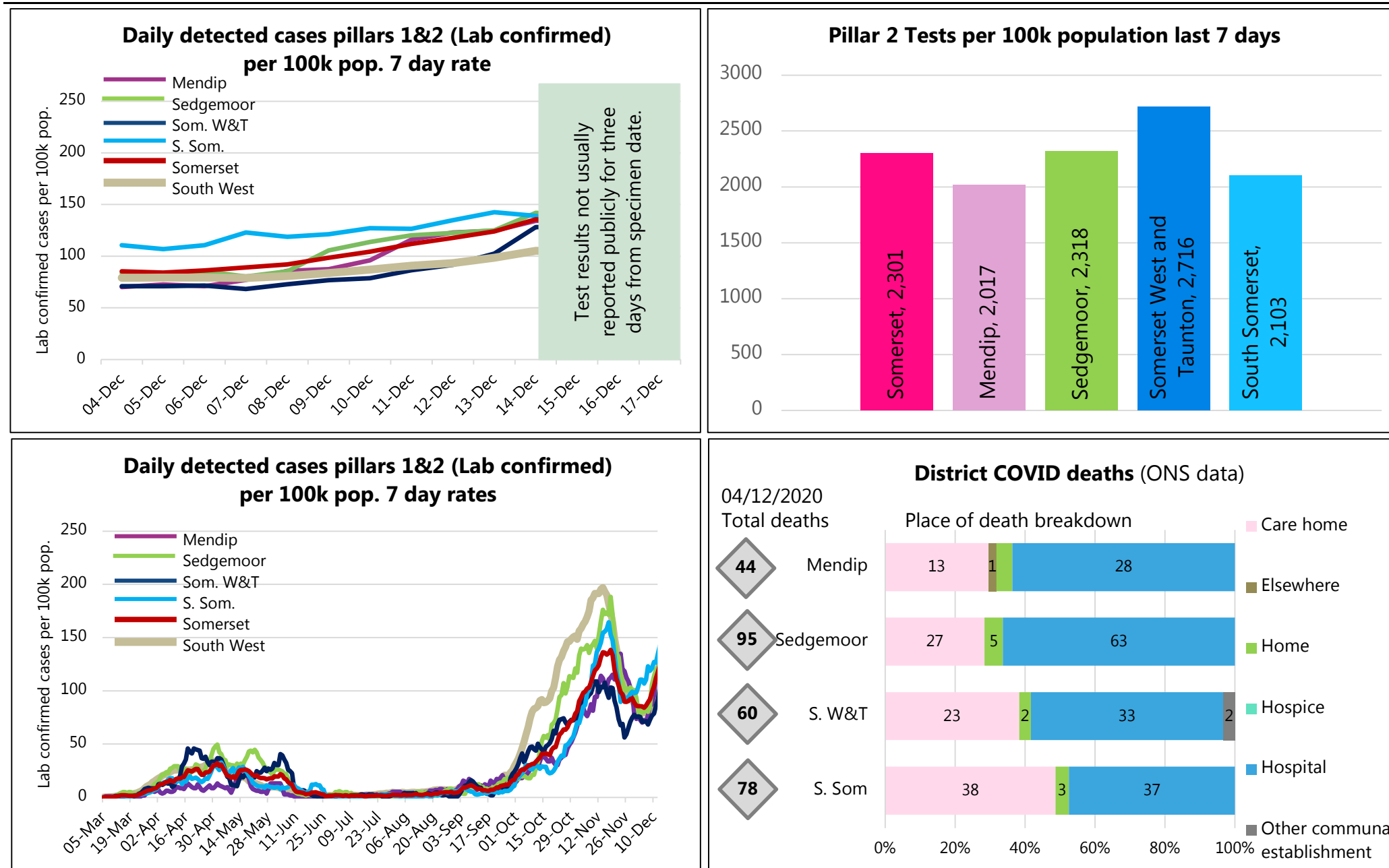
Daily COVID Deaths at Somerset Hospitals



Somerset Care Home Deaths (weekly) (ONS)



Somerset COVID-19 Local Outbreak Management Plan Dashboard



Somerset COVID-19 Local Outbreak Management Plan Dashboard

Data type	Next updated	How published	Link for more information
Public Health Outbreaks	18/12/2020	Summarised end of day, daily.	None. Not publicly distributed.
Lab confirmed cases: Pillars 1 & 2	19/12/2020	Published daily ~5pm with data to day before. By specimen date.	https://coronavirus.data.gov.uk/
Data by MSOA for the map	19/12/2020	Published daily. By specimen date.	None. Not publicly distributed. Data based on PHE reported cases. To note, this may differ slightly data on the coronavirus.data.gov.uk website due to additional data cleaning by PHE.
R value from SAGE group	18/12/2020	Published weekly on Friday.	https://www.gov.uk/guidance/the-r-number-in-the-uk
Pillar 2 testing	23/12/2020	Summarised weekly on Wednesdays and Thursdays	None. Not publicly distributed.
Hospital deaths (NHSE)	18/12/2020	Published daily ~2pm with data to day before. Most recent 5 days subject to data updates.	https://www.england.nhs.uk/statistics/statistical-work-areas/covid-19-daily-deaths/
Death counts (ONS) County and district level	22/12/2020	Published weekly on Tuesday with data to the Friday 11 days before.	https://www.ons.gov.uk/peoplepopulationandcommunity/healthandsocialcare/causesofdeath/datasets/deathregistrationsandoccurrencesbylocalauthorityandhealthboard

As of 2nd June 2020, numbers of lab-confirmed positive cases now include those identified by testing in all settings (pillars 1 and 2).

NB The higher case numbers seen in early June include a number of cases that have been falsely identified as positive following an issue at the laboratory. For further information please see the following statement from Somerset NHS Foundation Trust <https://somerseft.nhs.uk/?news=issue-affecting-some-covid-19-test-results-for-some-inpatients-at-musgrove-park-hospital>

Dashboard available at: <https://www.somerset.gov.uk/covid-19-dashboard/>