

Recycle More Messenger

Edition 5, 24 March 2022

Welcome to the fifth Sedgemoor and West Somerset **Recycle More Messenger**. As the new service beds in, now is the time for some helpful reminders about how to get the most from it.

Recycle More up and running

The service has been running since the end of Feb. That means 70,000+ homes will have had at least three expanded recycling collections and their first three-weekly rubbish collection.

It's still early days, but it seems to be working well for the vast majority of people. Almost everyone is now putting out the right materials on the right day. We can't provide details yet, but levels of new materials look high and recycling is up across the board.

Don't forget, we've altered the recycling routine for thousands of people, delivered new containers and crews are working new routes. It won't have been perfect for everyone straight away but we're working hard to fix any problems ASAP.



Unfortunately, box, bin and bag deliveries are currently taking longer than usual. Sorry for the delays. We're still catching up on the surge of orders from Storm Eunice and the launch of Recycle More.

We should be back on track in the next week or so. If you're waiting, please be patient and resist the urge to repeat order.

Changes to shared collections

We'll soon improve recycling for homes with shared/communal collections, like flats and houses of multiple occupancy.

Collection days changed for some communal residents at the end of Feb. In late June/early July we will look to expand recycling on these sites, adding extra containers and new materials where space and access allow.

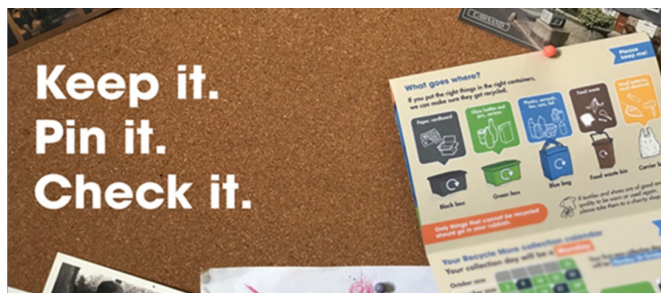
We'll write to everyone twice before any changes, in mid-May and early June.

Flip your lid/number your bag

Don't forget, your Bright Blue Bag has a Velcro-fastened lid to keep contents in when it's windy. Not everyone is making use of it— if you've not spotted it yet, you'll find yours tucked inside.

Partial to your bag? Numbering it helps crews return it to the right property— which can be tricky when you're working fast and making hundreds of collections. A Sharpie or marker pen works well.

Remembering your collection days



Going three-weekly makes it harder to remember collection days. Make sure you keep your collection day calendar safe so you can check. Pin it up, stick it on the fridge—whatever works for you.

Or, use the **My Collection Day** feature on the SWP website homepage to download a printable version of your calendar.

Better still, click the iCal icon to download your dates into the calendar on your computer or mobile device (Android and Apple). You'll even get an automatic reminder each week so you need never miss a collection again.



What plastics go in the blue bag?

- **Plastic bottles** like those for milk, soft drinks, shampoo, detergents.
- **Plastic pots** such as those for yoghurt, soup, face cream, hair gel, toiletries.
- **Plastic tubs** like those for margarine, ice cream, laundry tablets.
- **Plastic trays** (any colour) such as those for meat, fruit/veg, ready meals.

Can I recycle all plastics?

No. Some are still really difficult to recycle due to a lack of UK reprocessors. We don't want to collect material unless we know we can get it recycled and close to home.

Sorry, but we DO NOT collect

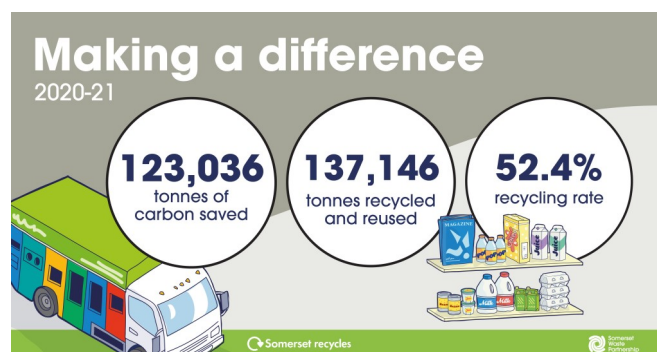
- **Thin stretchy/crinkly plastics**, such as carrier bags, food wrappings or film from food trays and punnets.
- **Other plastics** like toys, CD cases, coat hangers, blister packs, toothbrushes, polystyrene/ expanded polystyrene.
- **Mixed materials**, such as pet food pouches and crisp packets.

Some supermarkets take some of these so check where you shop. Or try terracycle.com/en-GB for local volunteer collections. If you can't reuse or recycle these, put them in the rubbish.

Recycling Tracker - sorting works

In 2020-21 97.8% of Somerset's recycling stayed in the UK, including 4,359 tonnes of plastic, of which 99.4% stayed in the UK.

This is possible because kerbside sorting produces the top quality recycling which is easier to get reprocessed close to home. Thank you: your efforts make a difference!



Coming soon... the Fixy Service

Recycling is great, repair and reuse is even better. This year SWP will be supporting and encouraging this across the county.

Look out for the new [Fixy Service](#) and other initiatives coming your way soon.